



# Gatwick Airport Northern Runway Project

Environmental Statement

Appendix 8.10.1 – Tree Survey Report and Arboricultural Impact Assessment – Part 4 - Clean Version

**Book 5**

VERSION: 3.0

DATE: JUNE 2024

Application Document Ref: 5.3

PINS Reference Number: TR020005



### Key

- Site boundary.
- Survey boundary.
- Tree with numbered reference. Canopy spread and coloured BS5837:2012 tree quality category as shown below.
  - Tree details estimate (accessible tree)
  - Tree in off site location
- Tree group plotted with individual stem locations and numbered reference. Canopy extents coloured to match BS5837:2012 tree quality category as shown below.
- Tree or Vegetation group with numbered reference. Canopy extents coloured to match BS5837:2012 tree quality category as shown below and dashed line to show indicative stem line.
- Hedge with numbered reference. Canopy extents and coloured BS5837:2012 tree quality category as shown below and dashed line to show hedge centerline.
- Woodland with numbered reference. Canopy extents coloured to match BS5837:2012 tree quality category as shown below and dashed line to show indicative tree line.

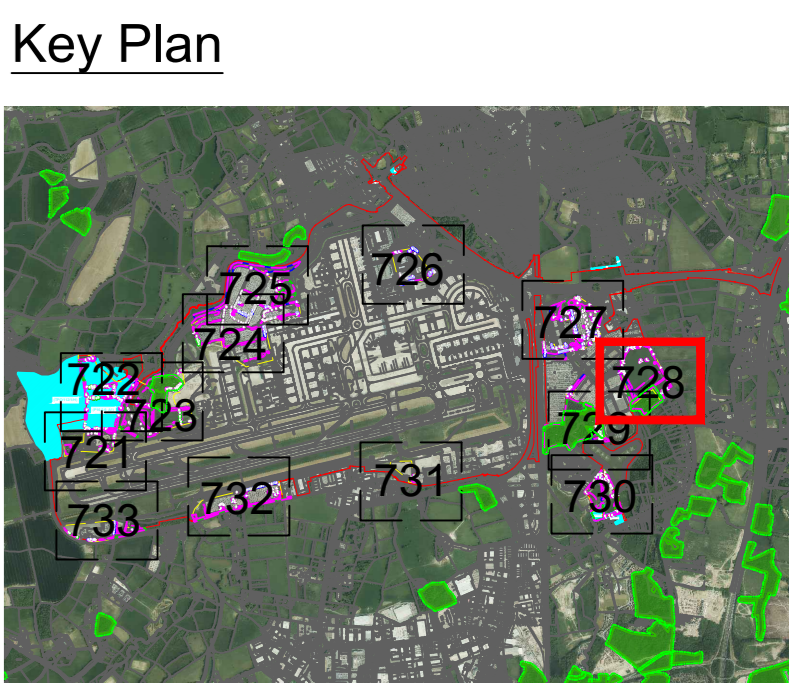
**BS 5837:2012 Tree Quality Categories - Table 1**

- Category A - High quality
- Category B - Moderate quality
- Category C - Low quality
- Category U - Unsuitable for retention

- Direction of first significant branch
- Root protection area (RPA). Calculated in accordance with Section 4.6 - BS5837:2012
- Veteran tree buffer (15 x stem Ø) (as per standing advice produced by Forestry England and Natural England)
- Trees protected by Tree Preservation Order. Bracketed number relates to the TPO reference.
- Designated Ancient Woodland (as per Natural England ancient woodland inventory, via open data publication)
- Ancient Woodland tree buffer (15m offset) (as per standing advice produced by Forestry England and Natural England)

**NOTES:**

- Refer to ES Appendix 8.10.1, Tree Survey Report and Arboricultural Impact Assessment for further details.
- Survey based on a visual inspection from the ground and is not intended as a full arboricultural inspection.
- Plan produced in accordance with recommendations set out in BS 5837:2012 - 'Trees in Relation to design, demolition and construction'.
- Survey based upon Aerial Photography and trees located by eye.



DOCUMENT

**Environmental Statement**

---

DRAWING TITLE

**Airport Tree Survey Plans  
Appendix 8.10.1  
Sheet 8 of 13**

DATE June 2024

ORIENTATION 	DRAWING NO. 728	REVISION For ES Issue
	DRAWN BY RC	PM / CHECKED BY DC

SCALE @ A0  
0m 25m 50m

Reproduced from Ordnance Survey map with the permission of Ordnance Survey on behalf of the controller of Her Majesty's Stationery Office © Crown Copyright (2023). License number 0100031673, 10001998, 100048492.  
© Copyright 2023 Gatwick Airport Limited. No part of this drawing is to be reproduced without prior permission of Gatwick Airport Limited.



**Key**

- Site boundary.
- Survey boundary.
- Tree with numbered reference. Canopy spread and coloured BS5837:2012 tree quality category as shown below.
  - Tree details estimate (inaccessible tree)
  - Tree in off site location
- Tree group plotted with individual stem locations and numbered reference. Canopy extents coloured to match BS5837:2012 tree quality category as shown below and dashed line to show indicative stem line.
- Hedge with numbered reference. Canopy extents coloured to match BS5837:2012 tree quality category as shown below and dashed line to show hedge centerline.
- Woodland with numbered reference. Canopy extents coloured to match BS5837:2012 tree quality category as shown below and dashed line to show indicative tree line.

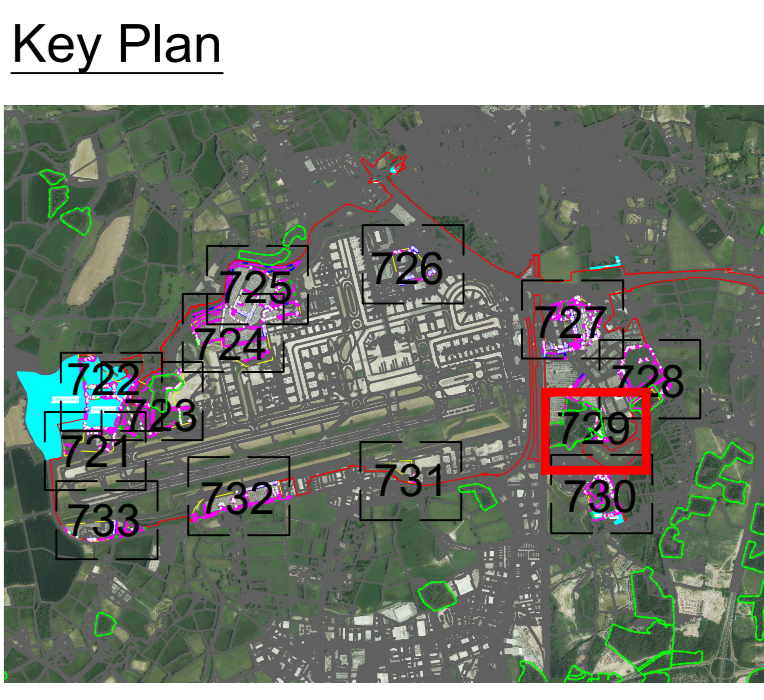
**BS 5837:2012 Tree Quality Categories - Table 1**

- Category A - High quality
- Category B - Moderate quality
- Category C - Low quality
- Category U - Unsuitable for retention

- Direction of first significant branch
- Root protection area (RPA). Calculated in accordance with Section 4.6 - BS5837:2012
- Veteran tree buffer (15 x stem Ø) (as per standing advice produced by Forestry England and Natural England)
- Tree protected by Tree Preservation Order. Bracketed number relates to the TPO reference.
- Designated Ancient Woodland (as per Natural England ancient woodland inventory, via open data publication)
- Ancient Woodland tree buffer (15m offset) (as per standing advice produced by Forestry England and Natural England)

**NOTES:**

- Refer to ES Appendix 8.10.1, Tree Survey Report and Arboricultural Impact Assessment for further details.
- Survey based on a visual inspection from the ground and is not intended as a full arboricultural inspection.
- Plan produced in accordance with recommendations set out in BS 5837:2012 - 'Trees in Relation to design, demolition and construction'.
- Survey based upon Aerial Photography and trees located by eye.



**DOCUMENT**

**Environmental Statement**

**DRAWING TITLE**

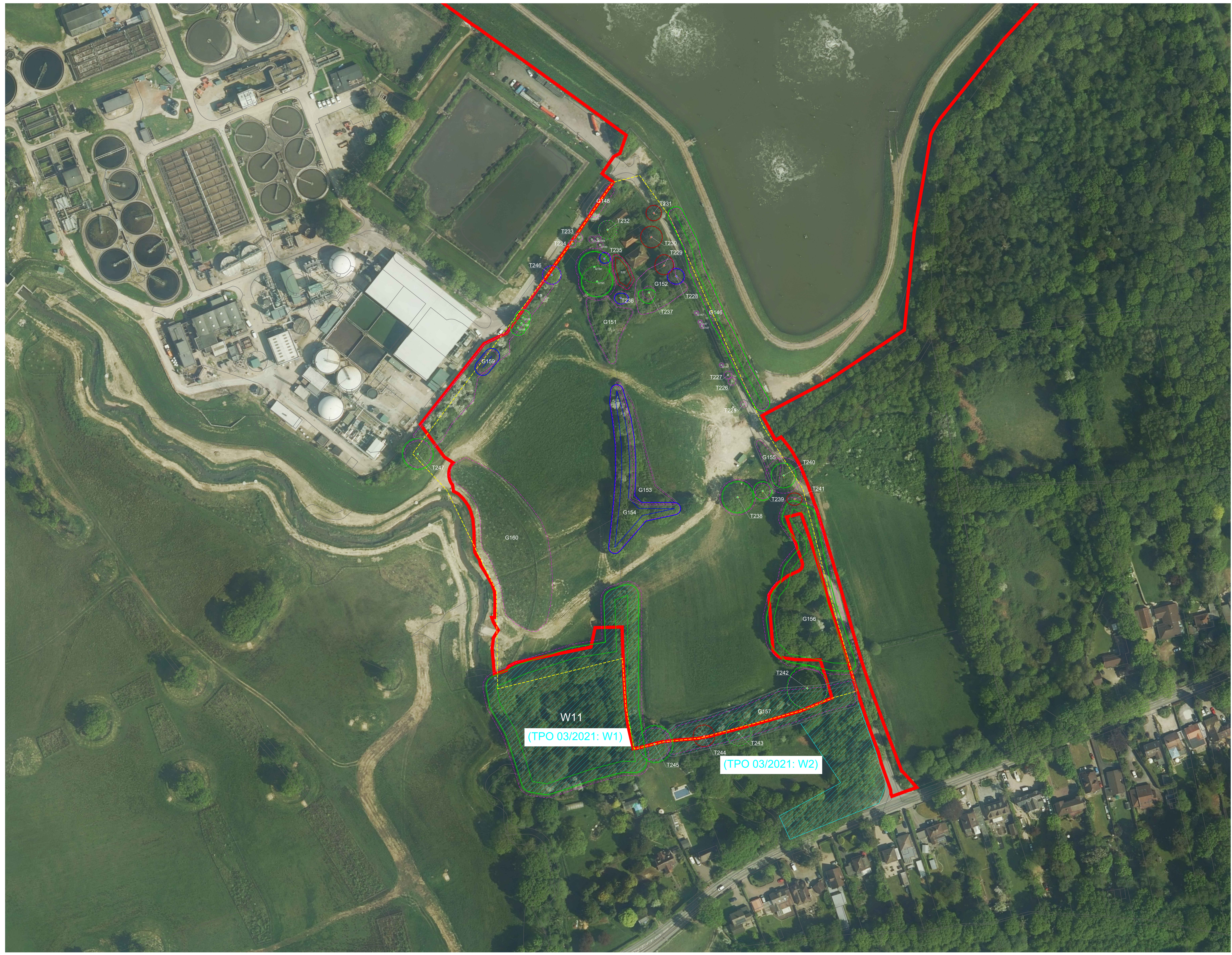
**Airport Tree Survey Plans**  
Appendix 8.10.1  
Sheet 9 of 13

**DATE**

June 2024

<b>ORIENTATION</b>	<b>DRAWING NO.</b>	<b>REVISION</b>
	729	For ES Issue
	<b>DRAWN BY</b>	<b>PM / CHECKED BY</b>
	RC	DC





**Key**

- Site boundary.
- Survey boundary.
- Tree with numbered reference. Canopy spread and coloured BS5837:2012 tree quality category as shown below.
  - Tree details estimate (inaccessible tree)
  - Tree in off site location
- Tree group plotted with individual stem locations and numbered reference. Canopy extents coloured to match BS5837:2012 tree quality category as shown below.
- Tree or Vegetation group with numbered reference. Canopy extents coloured to match BS5837:2012 tree quality category as shown below and dashed line to show indicative stem line.
- Hedge with numbered reference. Canopy extents coloured to match BS5837:2012 tree quality category as shown below and dashed line to show hedge centerline.
- Woodland with numbered reference. Canopy extents coloured to match BS5837:2012 tree quality category as shown below and dashed line to show indicative tree line.

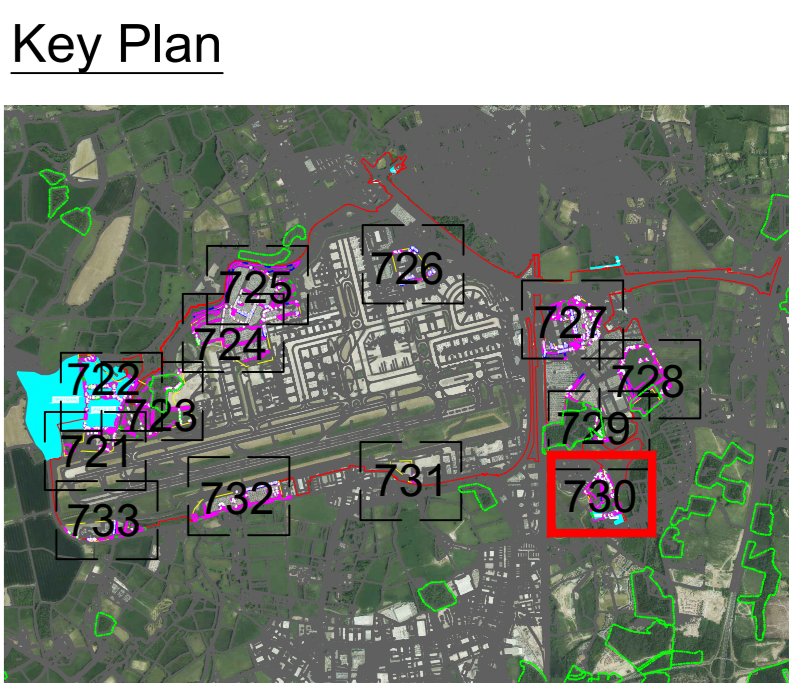
**BS 5837:2012 Tree Quality Categories - Table 1**

- Category A - High quality
- Category B - Moderate quality
- Category C - Low quality
- Category U - Unsuitable for retention

- Direction of first significant branch
- Root protection area (RPA). Calculated in accordance with Section 4.6 - BS5837:2012
- Veteran tree buffer (15 x stem Ø) (as per standing advice produced by Forestry England and Natural England)
- Tree protected by Tree Preservation Order. Bracketted number relates to the TPO reference.
- Designated Ancient Woodland (as per Natural England ancient woodland inventory, via open data publication)
- Ancient Woodland tree buffer (15m offset) (as per standing advice produced by Forestry England and Natural England)

**NOTES:**

- Refer to ES Appendix 8.10.1, Tree Survey Report and Arboricultural Impact Assessment for further details.
- Survey based on a visual inspection from the ground and is not intended as a full arboricultural inspection.
- Plan produced in accordance with recommendations set out in BS 5837:2012 - 'Trees in Relation to design, demolition and construction'.
- Survey based upon aerial Photography and trees located by eye.



DOCUMENT

**Environmental Statement**

---

DRAWING TITLE

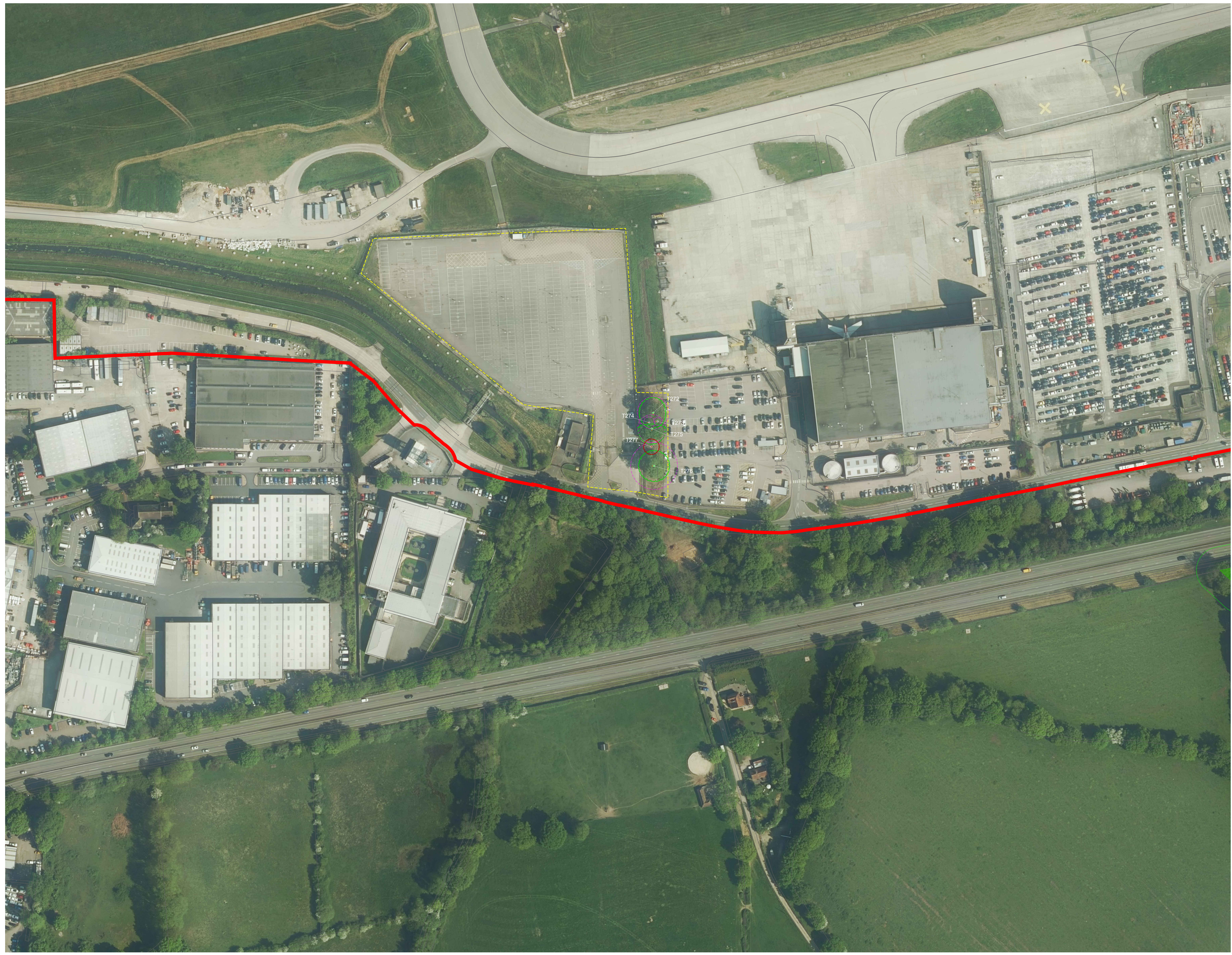
**Airport Tree Survey Plans  
Appendix 8.10.1  
Sheet 10 of 13**

DATE: **June 2024**




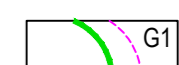
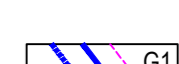


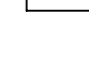



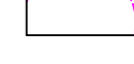
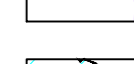



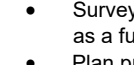
ORIENTATION	DRAWING NO.	REVISION
N	730	For ES Issue
	DRAWN BY	PM / CHECKED BY
	RC	DC

SCALE @ A0

0m      25m      50m

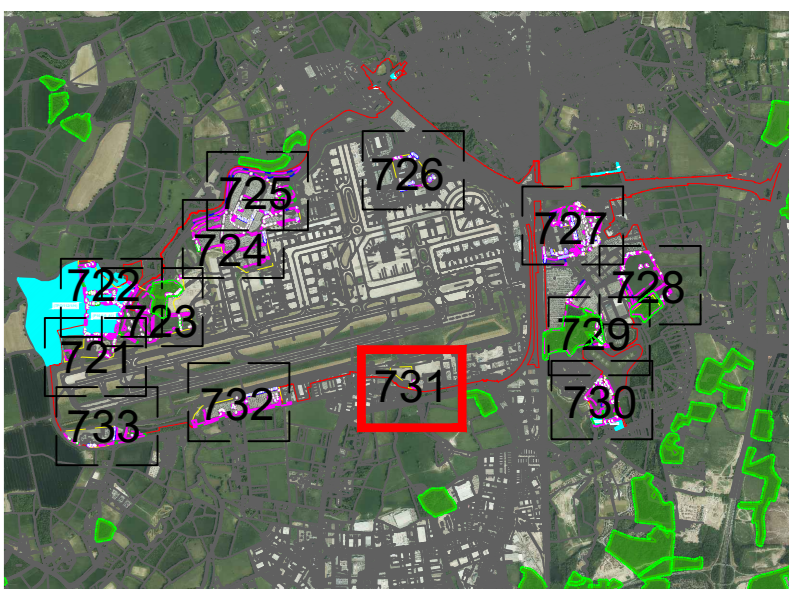


**Key**

-  Site boundary.
  -  Survey boundary.
  -  Tree with numbered reference. Canopy spread and coloured BS5837:2012 tree quality category as shown below.
    - Tree details estimate (inaccessible tree)
    - Tree in off site location
  -  Tree group plotted with individual stem locations and numbered reference. Canopy extents coloured to match BS5837:2012 tree quality category as shown below.
  -  Tree or Vegetation group with numbered reference. Canopy extents coloured to match BS5837:2012 tree quality category as shown below and dashed line to show indicative stem line.
  -  Hedge with numbered reference. Canopy extents coloured to match BS5837:2012 tree quality category as shown below and dashed line to show hedge centerline.
  -  Woodland with numbered reference. Canopy extents coloured to match BS5837:2012 tree quality category as shown below and dashed line to show indicative tree line.
- BS 5837:2012 Tree Quality Categories - Table 1**
-  Category A - High quality
  -  Category B - Moderate quality
  -  Category C - Low quality
  -  Category U - Unsuitable for retention
-  Direction of first significant branch
  -  Root protection area (RPA). Calculated in accordance with Section 4.6 - BS5837:2012
  -  Veteran tree buffer (15 x stem Ø) (as per standing advice produced by Forestry England and Natural England)
  -  Tree protected by Tree Preservation Order. Bracketted number relates to the TPO reference.
  -  Designated Ancient Woodland (as per Natural England ancient woodland inventory, via open data publication)
  -  Ancient Woodland tree buffer (15m offset) (as per standing advice produced by Forestry England and Natural England)

- NOTES:**
- Refer to ES Appendix 8.10.1. Tree Survey Report and Arboricultural Impact Assessment for further details.
  - Survey based on a visual inspection from the ground and is not intended as a full arboricultural inspection.
  - Plan produced in accordance with recommendations set out in BS 5837:2012 - 'Trees in Relation to design, demolition and construction'.
  - Survey based upon Aerial Photography and trees located by eye.

**Key Plan**



**DOCUMENT**

**Environmental Statement**

**DRAWING TITLE**

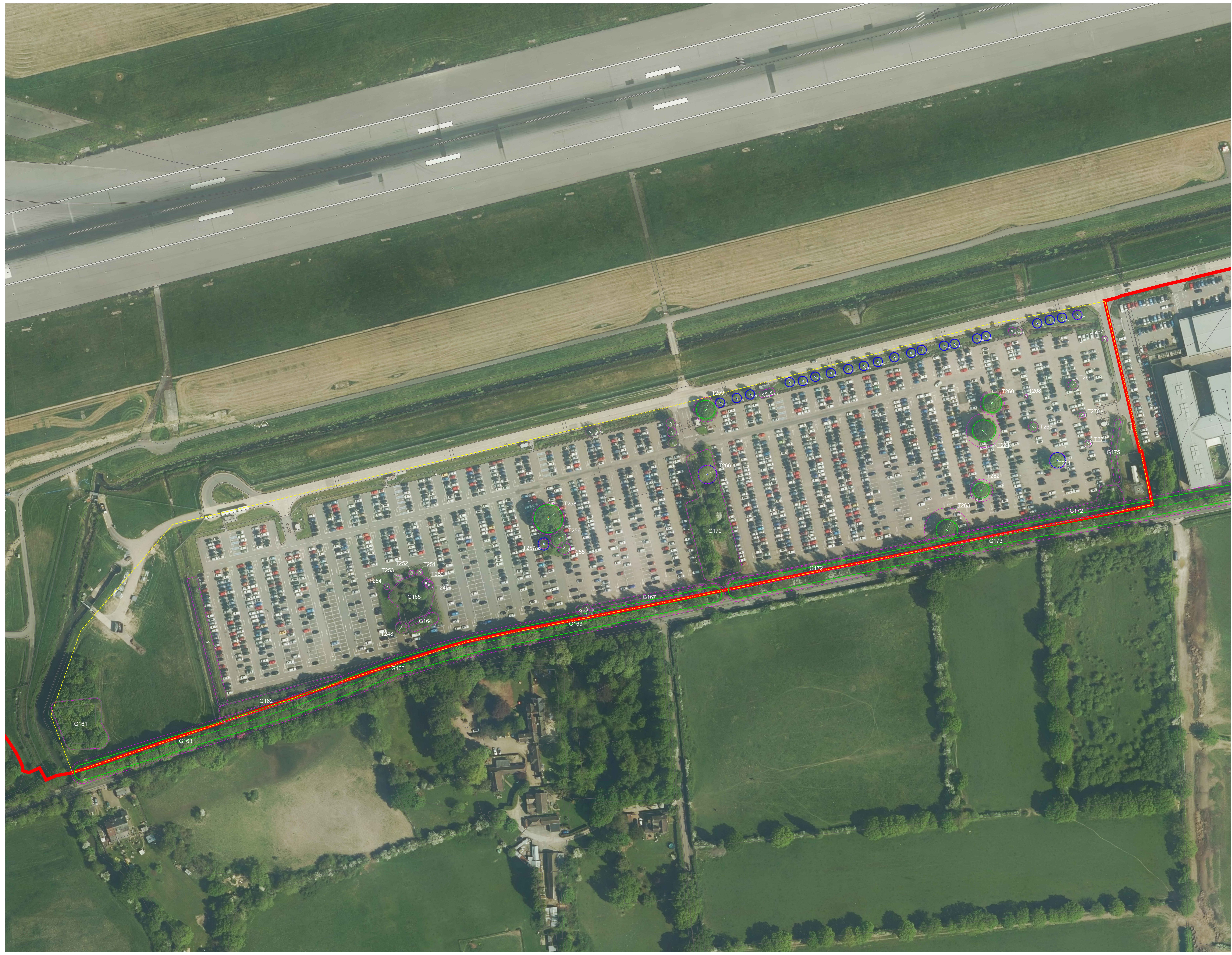
**Airport Tree Survey Plans  
Appendix 8.10.1  
Sheet 11 of 13**

DATE **June 2024**

ORIENTATION N	DRAWING NO. 731	REVISION For ES Issue
	DRAWN BY RC	PM / CHECKED BY DC

SCALE @ A0  
0m 25m 50m

Reproduced from Ordnance Survey map with the permission of Ordnance Survey on behalf of the controller of Her Majesty's Stationery Office © Crown Copyright (2023). License number 6100031673, 10001998, 100048492.  
© Copyright 2023 Gatwick Airport Limited. No part of this drawing is to be reproduced without prior permission of Gatwick Airport Limited.

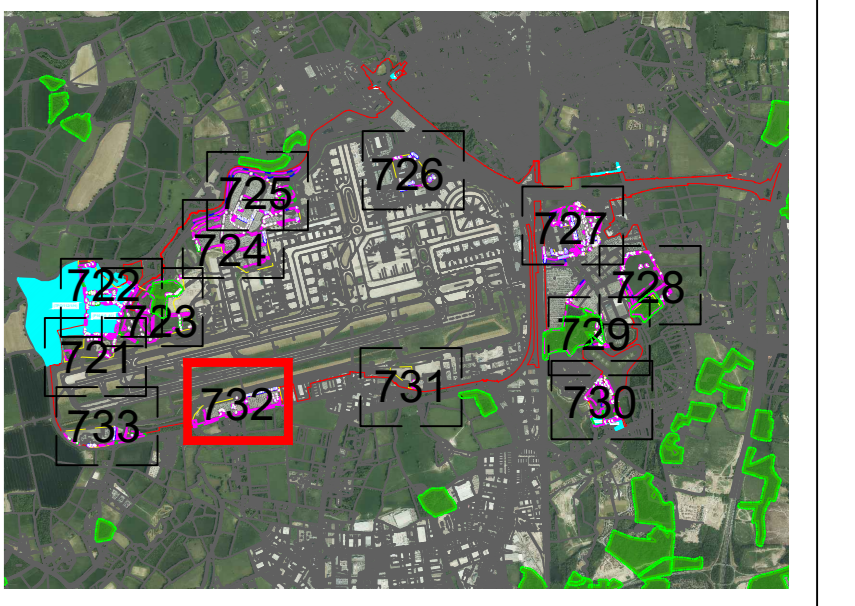


**Key**

- Site boundary.
  - Survey boundary.
  - Tree with numbered reference. Canopy spread and coloured BS5837:2012 tree quality category as shown below.  
    - = Tree details estimate (accessible tree)
    - = Tree in off site location
  - Tree group plotted with individual stem locations and numbered reference. Canopy extents coloured to match BS5837:2012 tree quality category as shown below.
  - Tree or Vegetation group with numbered reference. Canopy extents coloured to match BS5837:2012 tree quality category as shown below and dashed line to show indicative stem line.
  - Hedge with numbered reference. Canopy extents and coloured BS5837:2012 tree quality category as shown below and dashed line to show hedge centerline.
  - Woodland with numbered reference. Canopy extents and coloured BS5837:2012 tree quality category as shown below and dashed line to show indicative tree line.
- BS 5837:2012 Tree Quality Categories - Table 1**
- Category A - High quality
  - Category B - Moderate quality
  - Category C - Low quality
  - Category U - Unsuitable for retention
- Direction of first significant branch
  - Root protection area (RPA). Calculated in accordance with Section 4.6 - BS5837:2012
  - Veteran tree buffer (15 x stem Ø) (as per standing advice produced by Forestry England and Natural England)
  - Tree protected by Tree Preservation Order. Bracketed number relates to the TPO reference.
  - Designated Ancient Woodland (as per Natural England ancient woodland inventory, via open data publication)
  - Ancient Woodland tree buffer (15m offset) (as per standing advice produced by Forestry England and Natural England)

- NOTES:**
- Refer to ES Appendix 8.10.1, Tree Survey Report and Arboricultural Impact Assessment for further details.
  - Survey based on a visual inspection from the ground and is not intended as a full arboricultural inspection.
  - Plan produced in accordance with recommendations set out in BS 5837:2012 - 'Trees in Relation to design, demolition and construction'.
  - Survey based upon Aerial Photography and trees located by eye.

**Key Plan**



**DOCUMENT**

**Environmental Statement**

**DRAWING TITLE**

**Airport Tree Survey Plans  
Appendix 8.10.1  
Sheet 12 of 13**

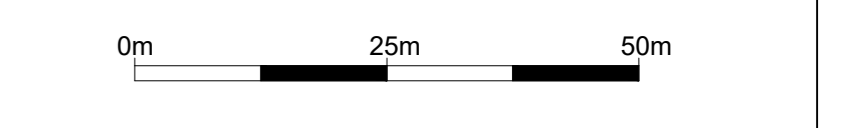
**DATE**

**June 2024**

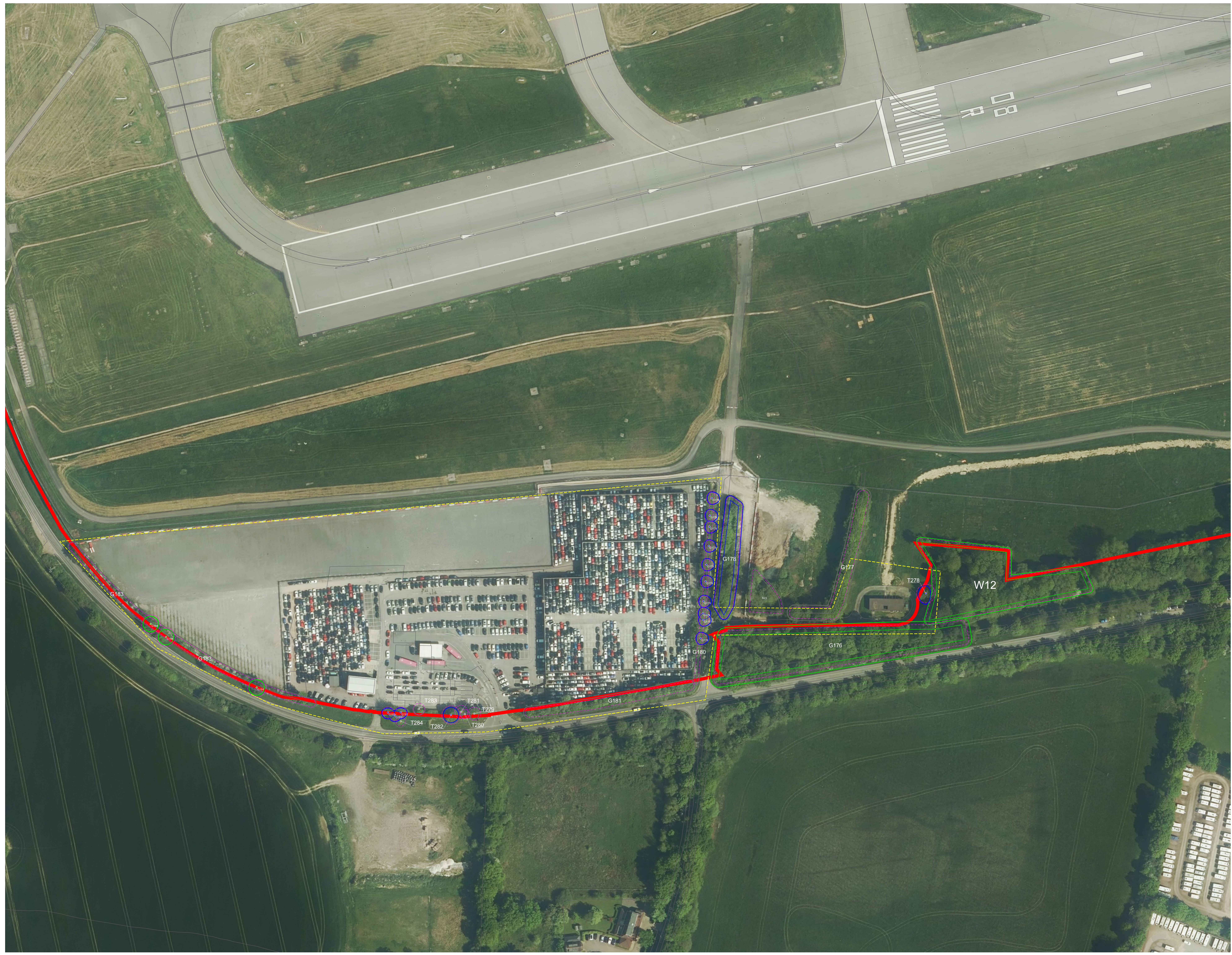
**ORIENTATION**

N ↑	DRAWING NO.	REVISION
	732	For ES Issue
	DRAWN BY	PM / CHECKED BY
	RC	DC

**SCALE @ A0**



Reproduced from Ordnance Survey map with the permission of Ordnance Survey on behalf of the controller of Her Majesty's Stationery Office © Crown Copyright (2023). License number 6100031673, 10001998, 100048492.  
© Copyright 2023 Gatwick Airport Limited. No part of this drawing is to be reproduced without prior permission of Gatwick Airport Limited.



### Key

- Site boundary.
- Survey boundary.
- Tree with numbered reference. Canopy spread and coloured BS5837:2012 tree quality category as shown below.
  - = Tree details estimate (inaccessible tree)
  - = Tree in off site location
- Tree group plotted with individual stem locations and numbered reference. Canopy extents coloured to match BS5837:2012 tree quality category as shown below.
- Tree or Vegetation group with numbered reference. Canopy extents coloured to match BS5837:2012 tree quality category as shown below and dashed line to show indicative stem line.
- Hedge with numbered reference. Canopy extents and coloured BS5837:2012 tree quality category as shown below and dashed line to show hedge centerline.
- Woodland with numbered reference. Canopy extents coloured to match BS5837:2012 tree quality category as shown below and dashed line to show indicative tree line.

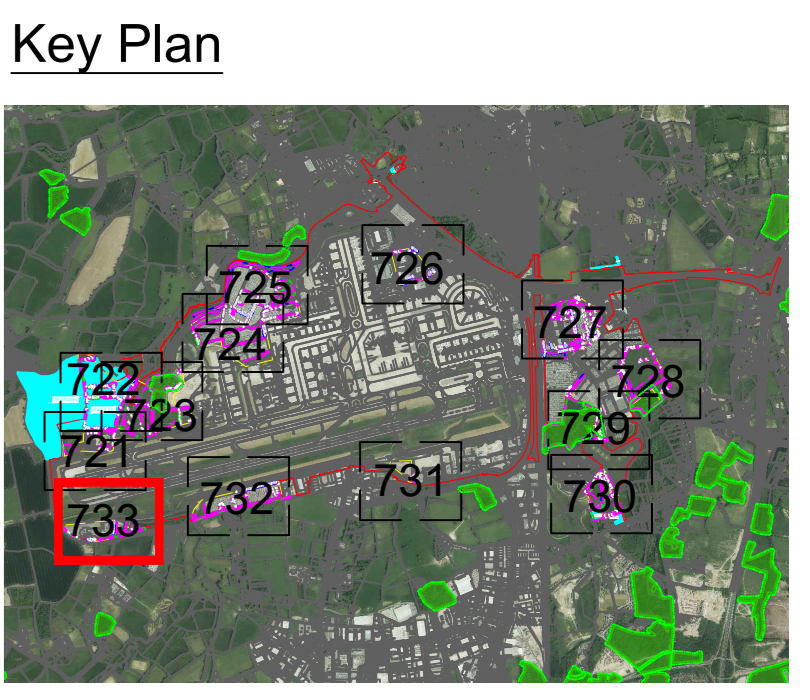
**BS 5837:2012 Tree Quality Categories - Table 1**

- Category A - High quality
- Category B - Moderate quality
- Category C - Low quality
- Category U - Unsuitable for retention

- Direction of first significant branch
- Root protection area (RPA). Calculated in accordance with Section 4.6 - BS5837:2012
- Veteran tree buffer (15 x stem Ø) (as per standing advice produced by Forestry England and Natural England)
- Tree protected by Tree Preservation Order. Bracketed number relates to the TPO reference.
- Designated Ancient Woodland (as per Natural England ancient woodland inventory, via open data publication)
- Ancient Woodland tree buffer (15m offset) (as per standing advice produced by Forestry England and Natural England)

**NOTES:**

- Refer to ES Appendix 8.10.1, Tree Survey Report and Arboricultural Impact Assessment for further details.
- Survey based on a visual inspection from the ground and is not intended as a full arboricultural inspection.
- Plan produced in accordance with recommendations set out in BS 5837:2012 - 'Trees in Relation to design, demolition and construction'.
- Survey based upon Aerial Photography and trees located by eye.



DOCUMENT

**Environmental Statement**

---

DRAWING TITLE

**Airport Tree Survey Plans  
Appendix 8.10.1  
Sheet 13 of 13**

DATE

**June 2024**

ORIENTATION	DRAWING NO.	REVISION	
N	733	For ES Issue	
	DRAWN BY	PM / CHECKED BY	
	RC	DC	

SCALE @ A0

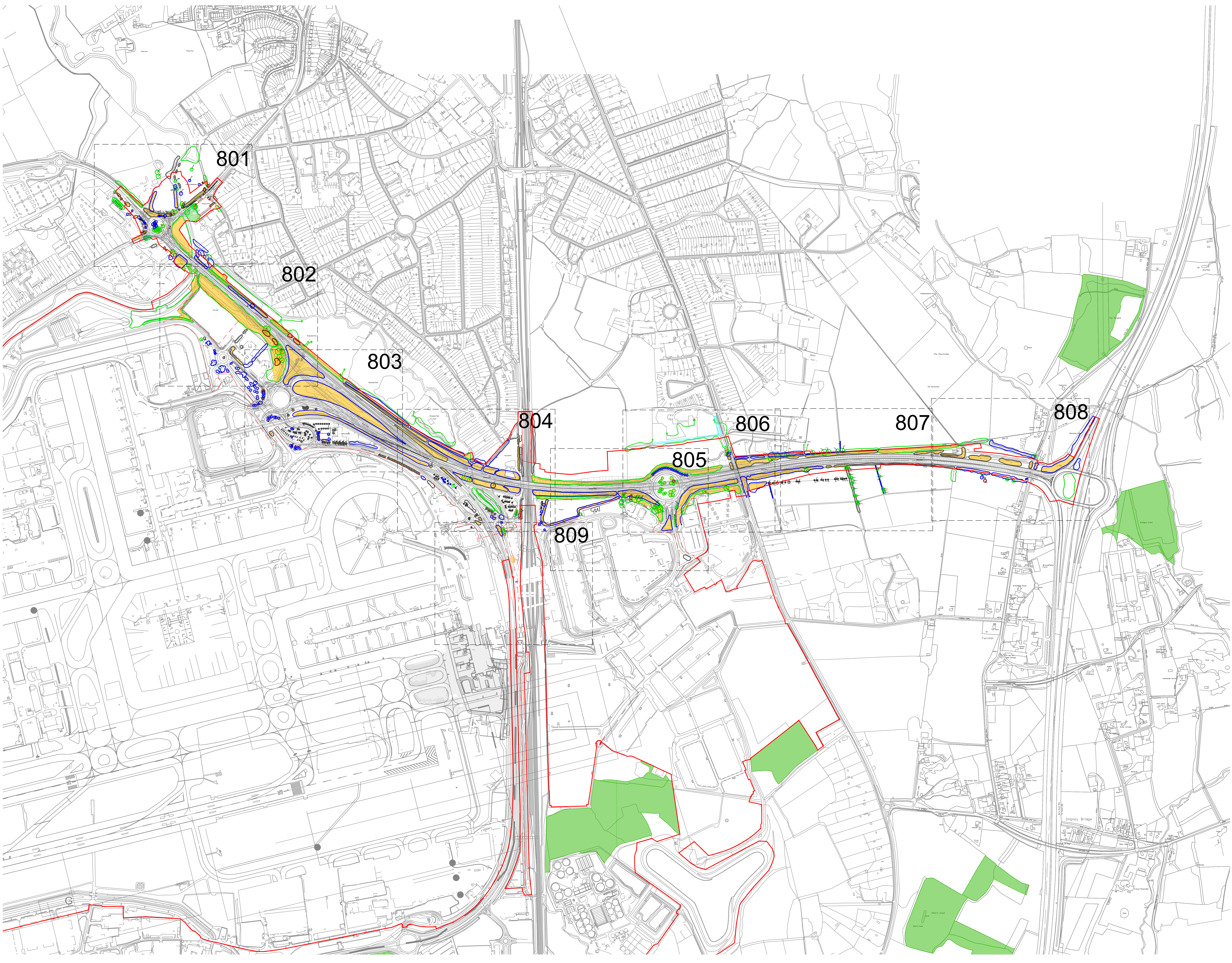
0m      25m      50m

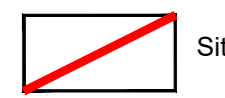
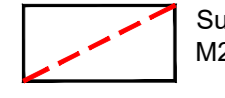


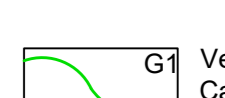
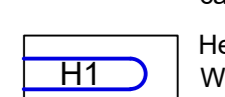
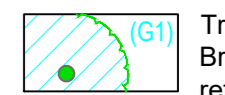
Reproduced from Ordnance Survey map with the permission of Ordnance Survey on behalf of the controller of Her Majesty's Stationery Office © Crown Copyright (2023). License number 0100031673, 10001998, 100048492.

© Copyright 2023 Gatwick Airport Limited. No part of this drawing is to be reproduced without prior permission of Gatwick Airport Limited.

Appendix H  
M23 & A23 Preliminary Tree Removal Plans





-  Site Boundary
-  Survey Boundary / Boundary of M23/A23 construction activity
-  Projected Tree Loss required for construction (Worst Case Scenario)
-  Tree with numbered reference. Canopy spread and coloured BS5837:2012 tree quality category as shown below.
  - = Tree details estimate (inaccessible tree)
  - = Tree in off site location
-  G1 Vegetation group with numbered reference. Canopy extent and BS5837:2012 tree quality category as shown below.
-  H1 Hedge with numbered reference. Width and BS5837:2012 tree quality category as shown below.
- BS 5837:2012 Tree Quality Categories - Table 1**
  - Category A - High quality
  - Category B - Moderate quality
  - Category C - Low quality
  - Category U - Unsuitable for retention
-  Tree protected by Tree Preservation Order. Bracketted number relates to the TPO reference.

**NOTE:**  
 • Refer to ES Appendix 8.10.1: Tree Survey Report and Arboricultural Impact Assessment for further details.

**DOCUMENT**

Environmental Statement

**DRAWING TITLE**

M23 & A23 Preliminary Tree Removal Plans Appendix 8.10.1 Overview

**DATE**

June 2024

**ORIENTATION**



**DRAWING NO.**

800

**REVISION**

For ES Issue

**DRAWN BY**

RC

**PM / CHECKED BY**





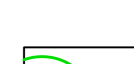
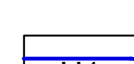
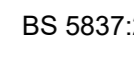

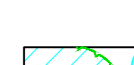
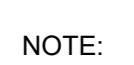
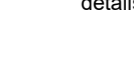
DC

**SCALE @ A0**

Custom Scale

Reproduced from Ordnance Survey map with the permission of Ordnance Survey on behalf of the controller of Her Majesty's Stationery Office © Crown Copyright (2023). License number 0100031673, 10001998, 100048492.  
 © Copyright 2023 Gatwick Airport Limited. No part of this drawing is to be reproduced without prior permission of Gatwick Airport Limited.

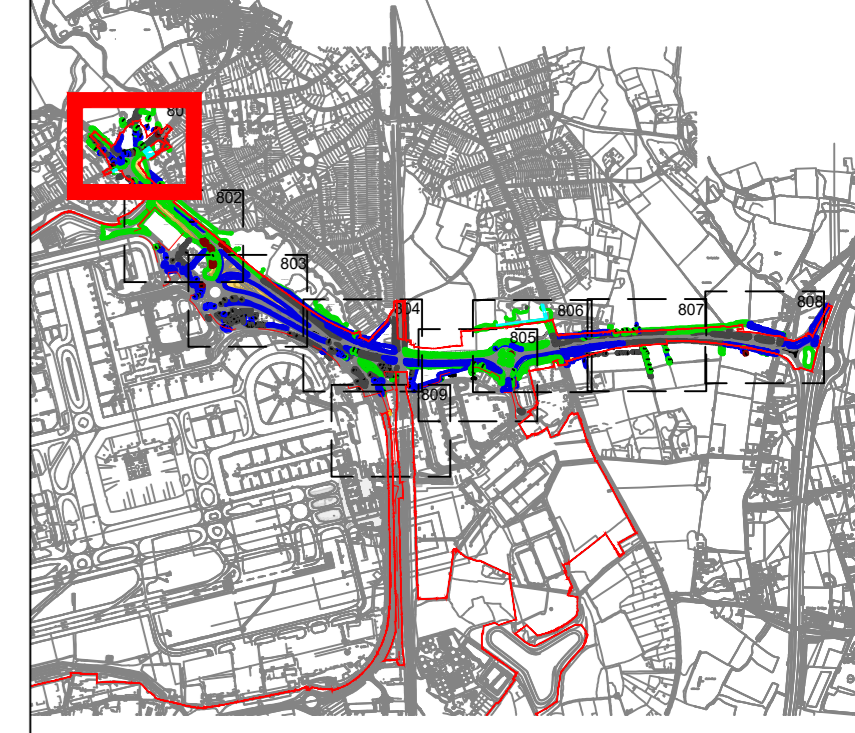
**Key**

-  Site Boundary
-  Survey Boundary / Boundary of M23/A23 construction activity
-  Projected Tree Loss required for construction (Worst Case Scenario)
-  Tree with numbered reference. Canopy spread and coloured BS5837:2012 tree quality category as shown below.  
 # = Tree details estimate (inaccessible tree)  
 \* = Tree in off site location
-  G1 Vegetation group with numbered reference. Canopy extents and BS5837:2012 tree quality category as shown below.
-  H1 Hedge with numbered reference. Width and BS5837:2012 tree quality category as shown below.
- BS 5837:2012 Tree Quality Categories - Table 1**
-  Category A - High quality
-  Category B - Moderate quality
-  Category C - Low quality
-  Category U - Unsuitable for retention
-  Tree protected by Tree Preservation Order. Bracketted number relates to the TPO reference.

**NOTE:**  
 \* Refer to ES Appendix 8.10.1: Tree Survey Report and Arboricultural Impact Assessment for further details.



**Key Plan**



DOCUMENT

**Environmental Statement**

DRAWING TITLE  
**M23 & A23 Preliminary Tree Removal Plans**  
 Appendix 8.10.1  
 Sheet 1 of 9

DATE  
**June 2024**

ORIENTATION N	DRAWING NO. 801	REVISION For ES Issue
	DRAWN BY RC	PM / CHECKED BY DC

SCALE @ A0

Reproduced from Ordnance Survey map with the permission of Ordnance Survey on behalf of the controller of Her Majesty's Stationery Office © Crown Copyright (2023). License number 0100031073, 10004998, 100048492.  
 © Copyright 2023 Gatwick Airport Limited. No part of this drawing is to be reproduced without prior permission of Gatwick Airport Limited.